



Optimal productivity

- Up to 4 simultaneous, proportional movements
- Optimal transport length

Excellent maneuverability in the tightest spaces

- Shortest turning radius
- No turret tailswing

Outstanding rough terrain driving features

- 4 wheel drive and 4 wheel steer
- Differential wheel lock
- 42 cm ground clearance



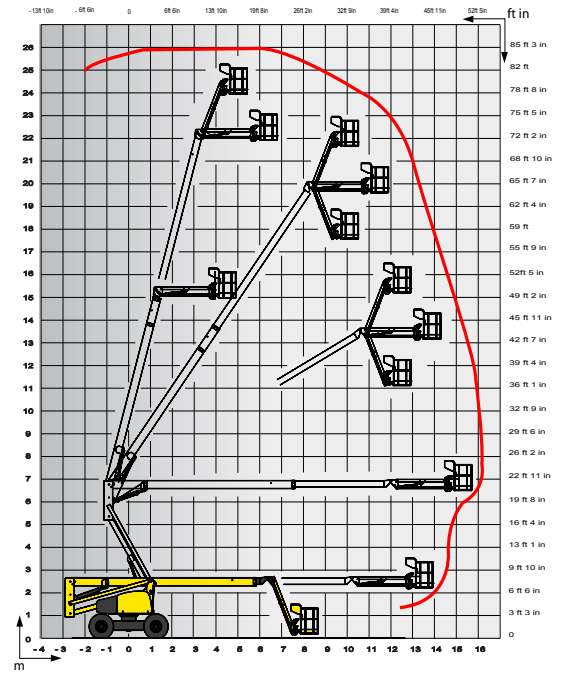
HA260 PX

ROUGH TERRAIN ARTICULATING BOOMS

TECHNICAL DATA

HA260 PX

| | |
|-----------------------------------|-------------------|
| Working height | 25.6 m |
| Platform height | 23.6 m |
| Horizontal outreach | 16.2 m |
| Up and over clearance | 6.76 m |
| Lift capacity | 230 kg |
| F x G Platform size | 1.8 x 0.8 m |
| A Length - stowed | 12 m |
| H Transport length | 9.5 m |
| B Width | 2.38 m |
| C Height - stowed | 2.71 m |
| Vertical jib rotation | 140° (+70/-70) |
| Platform rotation | 180° (+90/-90) |
| Turntable rotation | 360° |
| Tailswing | 0 m |
| Tailswing riser down | 1.76 m |
| D Wheelbase | 2.8 m |
| E Ground clearance | 42 cm |
| Tilt | 5° |
| Drive speed | 0.5 - 4.5 km/h |
| Gradeability | 40 % |
| Turning radius - outside | 4.15 m |
| Tires - foam-filled | 385/65-22.5 |
| Power source | 33.2 kW - 45.1 hp |
| Weight | 15 890 kg |



STANDARD EQUIPMENT

- 4 Wheel drive and steer
- Differential wheel lock increasing rough terrain capacity
- Proportional controls enhancing comfort and safety
- 4 simultaneous movements for highest productivity
- 230 kg (2 persons) load capacity
- Sound and light alarm for tilt and load
- Electric pump system and emergency descent
- 12 V battery / electrical control system
- Safe to use in winds up to 45 km/h – 28 mph
- Hourmeter
- Tow hooks

OPTIONS AND ACCESSORIES

- On-board 3.3 kW generator
- Cold weather kit
- Power to platform (Female plug in the basket 110V/220V)
- Alarm package (motion and travel alarm)
- Travel alarm
- Rotating beacon
- 15W flashing light
- Air line to platform
- 55W platform working light
- Hydraulic oil cooler
- Hydraulic oil in tank and circuit for warm countries
- Biodegradable hydraulic oil
- Upper control box protection cover (transparent plastic and fixed place)
- Automatic Overspeed Air Shutdown Valve (Electric one-way valve, flame arrestor, spark arrestor)
- 30 mA circuit-breaker
- Large platform 2.44 m x 0.8 m with drop bar

